



XCore Mini

Simple for the surgeon.
Customizable for the patient.



XCore Mini, an expandable vertebral body replacement (VBR), is designed to perfectly complement the procedural goals of the spine surgeon: **realignment, stabilization and fusion**. Inspired by this, the system is intended to promote lasting height restoration, sustained neural decompression, restored sagittal balance and robust fusion. Additionally, the system was designed to be **modular, simple and versatile**. Thanks to these high standards, XCore Mini continually pushes to become a leading expandable VBR.

Product highlights

Secure endcap spikes

- 2 mm depth maximizes stability

Simple insertion and expansion

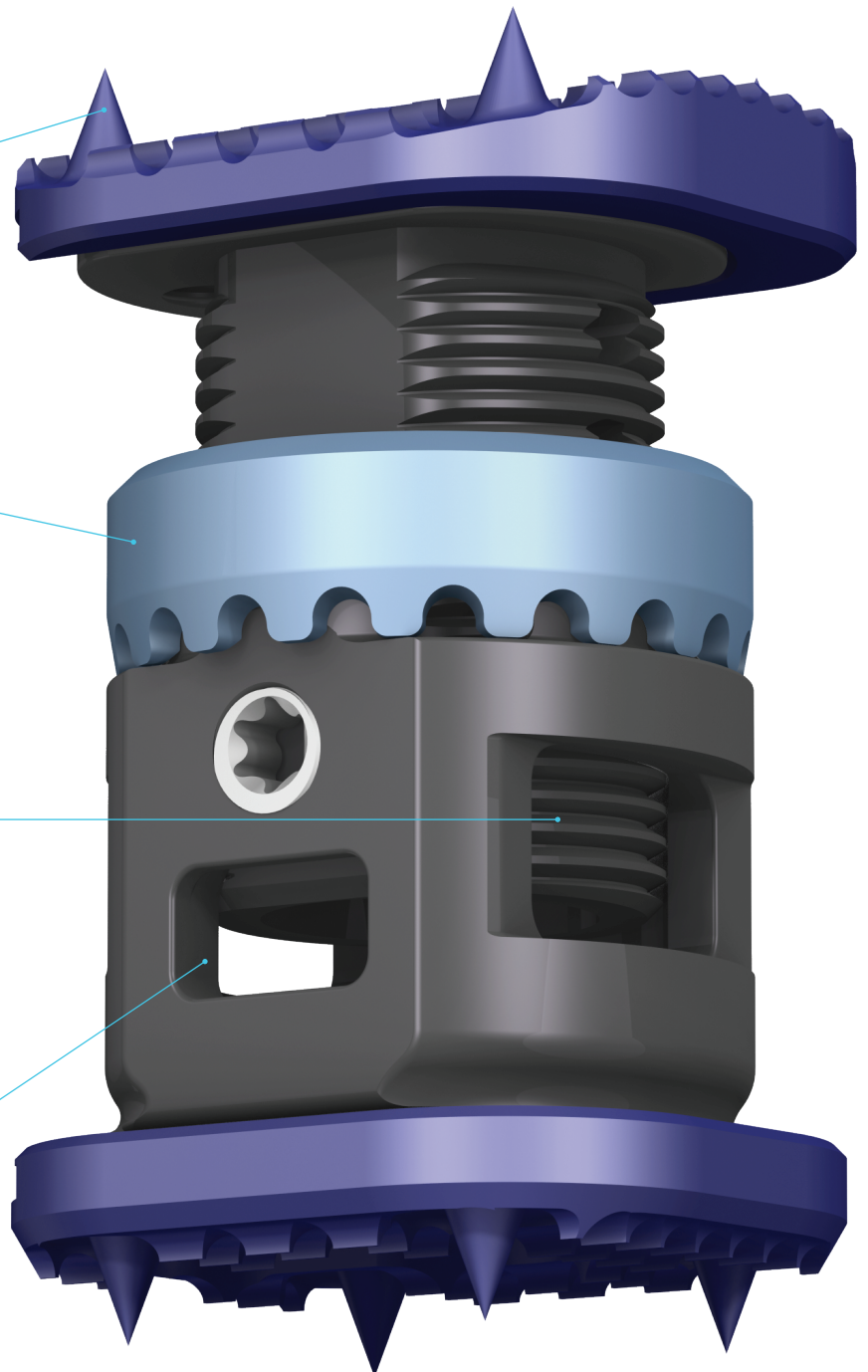
- Robust spinning sleeve
- Low-profile inserter

Smooth and robust expanding core

- Double lead threads allows for quicker expansion
- Strength during expansion

Large central aperture

- Central core aperture allows for larger fusion column
- Large anterior graft window allows for additional packing in situ



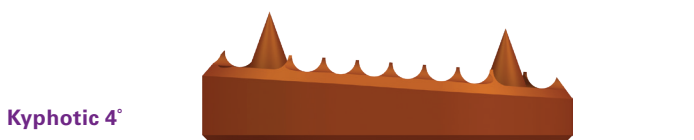
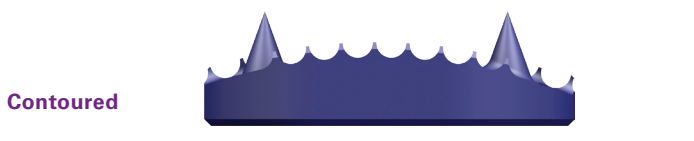
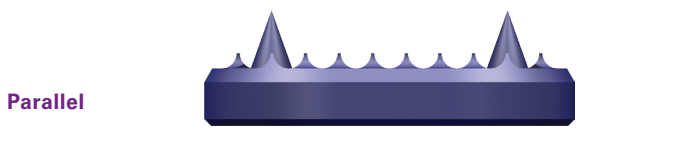
Overview

The size, shape and strength of the vertebral bodies and endplates are dependent on many factors such as age, gender, race, pathology and personal health. XCore Mini was designed to provide surgeons with the ability to intraoperatively adapt to and provide solutions for these variations in patient anatomy. Multiple cores and endplates are included as part of the XCore Mini system.

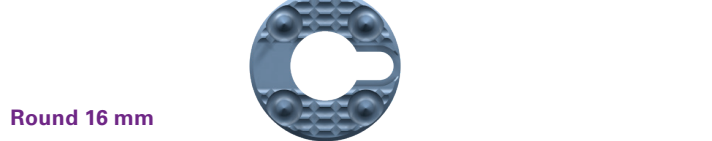
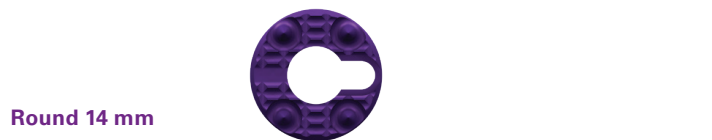
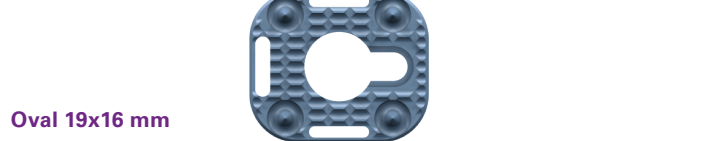
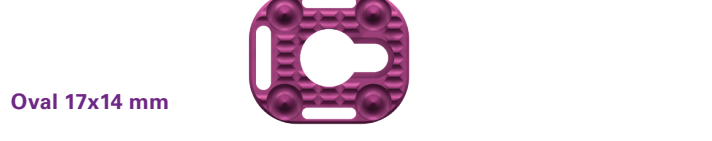
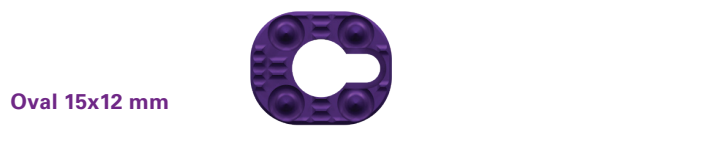
Core aperture options



Endcap shape options



Endcap footprint options



 **NuVasive, Inc.**

7475 Lusk Blvd., San Diego, CA 92121 USA
+1 800.475.9131

 **NuVasive Netherlands B.V.**

Jachthavenweg 109A, 1081 KM Amsterdam, The Netherlands
+31 20 72 33 000

For important product safety information, please visit [nuvasive.com/eifu](https://www.nuvasive.com/eifu)

©2020. NuVasive, Inc. All rights reserved. 9500920 D

 2797

[nuvasive.com](https://www.nuvasive.com)

