

# VuePoint II

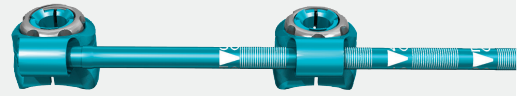
Posterior cervical fusion



# For simple and complex cases

## Adjustable cross-connector

- Accomodates placement after the main construct is secured
- Tulip-to-tulip
- Low-profile
- Translational
- Fits between tight screws



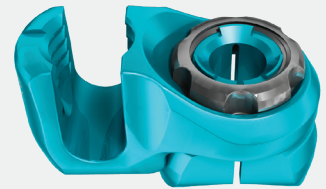
## Offset connectors

- 11 mm
- 25 mm
- 45° acute



## Extra rod connector

- Pre-assembled
- Requires no pre-planning



## Rod-to-rod connectors

### Inline

- 3.5 to 3.5 mm
- 3.5 to 5.5 mm

### Offset

- 3.5 to 3.5 mm
- 3.5 to 5.5 mm (rotational)



## Hinged rod

- 0° to 110° angulation
- Small footprint hinge
- Locks down
- Accepts counter-torque



## Set screw repeater

- Provides fast delivery of multiple set screws



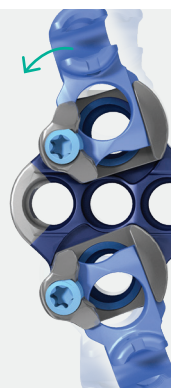
## Reduction tower

- Simple engagement and disengagement
- Zero run on rod profile
- Controlled segmented reduction
- Large visualization windows



## Adjustable keel plate

- Top-loading
- Medial-lateral translation
- Cranial-caudal swing
- 0° to -20° bone screw angulation
- Low-profile
- Bi-colored



# Fully junctional and variable

## Favoured-angle screw

- 55° angulation in favored direction
- Bi-colored
- Friction-fit head
- Low-profile
- Small footprint



## Partially threaded screw

- 55° angulation in favored direction
- Bi-colored
- Friction-fit head
- Constant 10 mm smooth
- Low-profile
- Small footprint



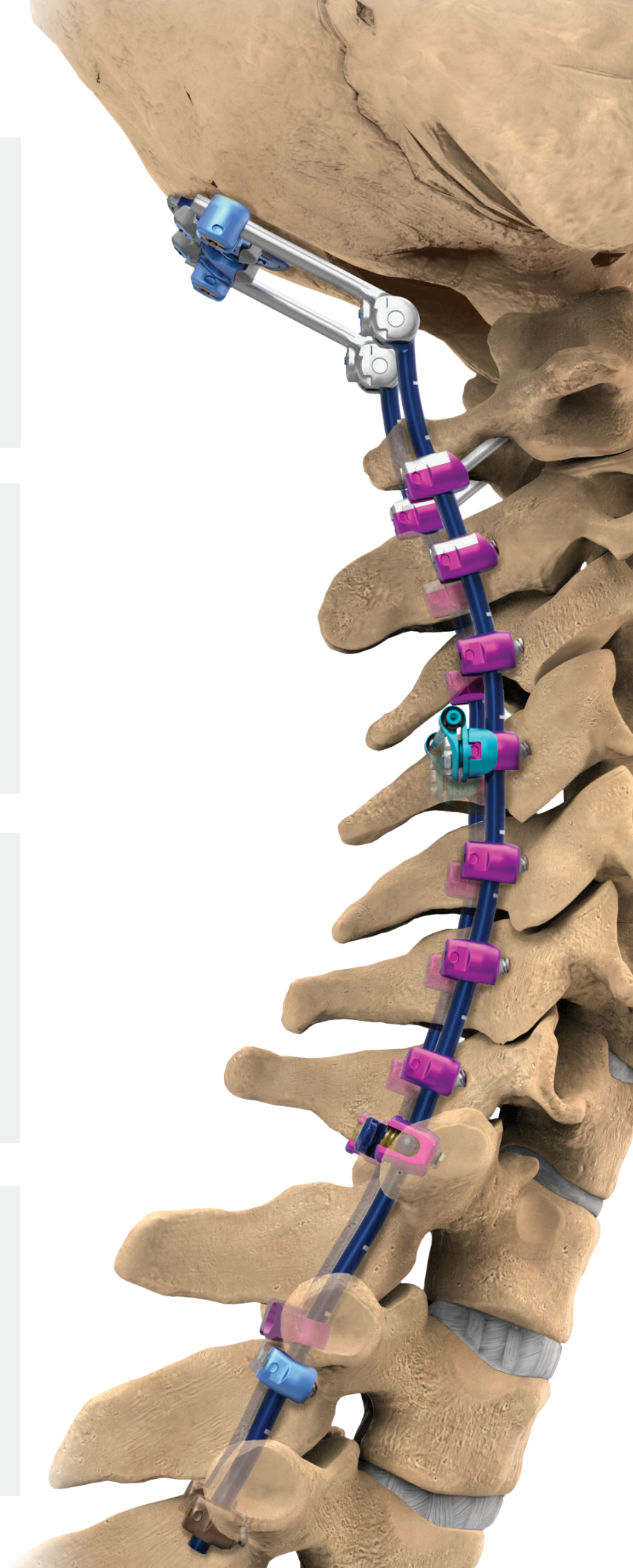
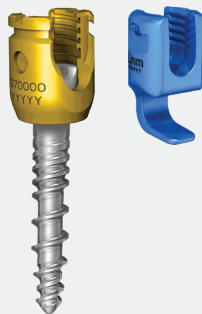
## Multi axial screw

- 40° angulation in each direction
- Friction-fit head
- Low-profile
- Small footprint



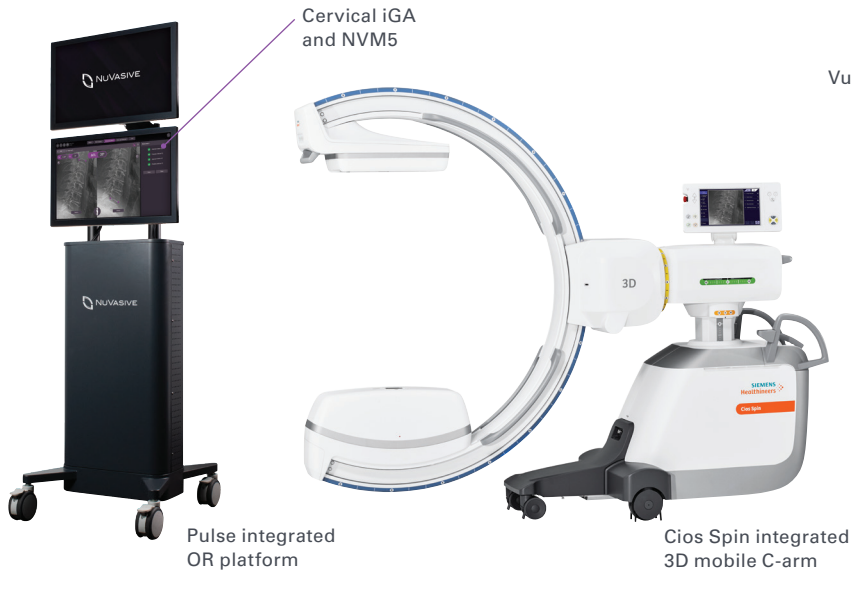
## Large diameter screw

- 5.0/5.5 mm diameter with 3.5 mm rod tulip
- 60° cone of angulation
- Aggressive pedicle screw pitch and taper



# PCF procedural solution

*Powered by Surgical Intelligence*



Cervical iGA and NVM5

VuePoint II

Pulse integrated OR platform

Cios Spin integrated 3D mobile C-arm

**Surgical planning**

**Positioning the patient**

**Accessing the spine**

**Drilling and tapping**

**Fixation**

**NuVasive, Inc.**  
7475 Lusk Blvd., San Diego, CA 92121 USA  
+1 800.475.9131

**EC REP NuVasive Netherlands B.V.**  
Jachthavenweg 109A, 1081 KM Amsterdam, The Netherlands  
+31 20 72 33 000

Pulse is not yet CE marked. Some modalities may not be approved and available in all markets.  
Cios Spin is not yet available in all countries. Cios Spin is courtesy of Siemens Healthineers.

©2019 NuVasive, Inc. All rights reserved. 9501043 F

CE 2797

[nuvasive.com](http://nuvasive.com)

