

## TLX 20°

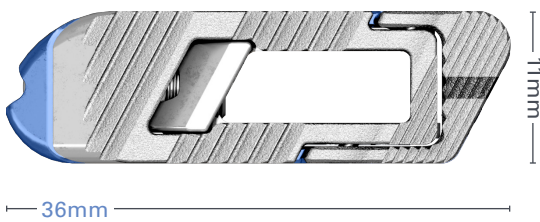
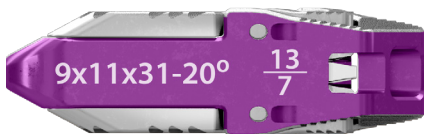
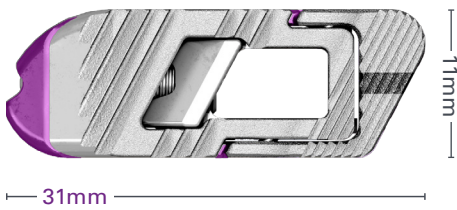
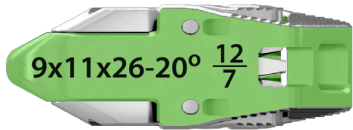
Restore sagittal alignment.  
Maintain coronal alignment.



# Alignment. Stability. Fusion.

## Customizable Fit

- True anatomical fit enabled by various heights, footprints, and lordotic options
- Controlled, incremental expansion up to 20° secured by integrated auto-lock feature



## Oblique Lordotic Expansion

- Anterior column stability and restoration of sagittal alignment with up to 20° of customizable lordosis
- Unique implant profile maintains coronal alignment while expanding in the oblique plane



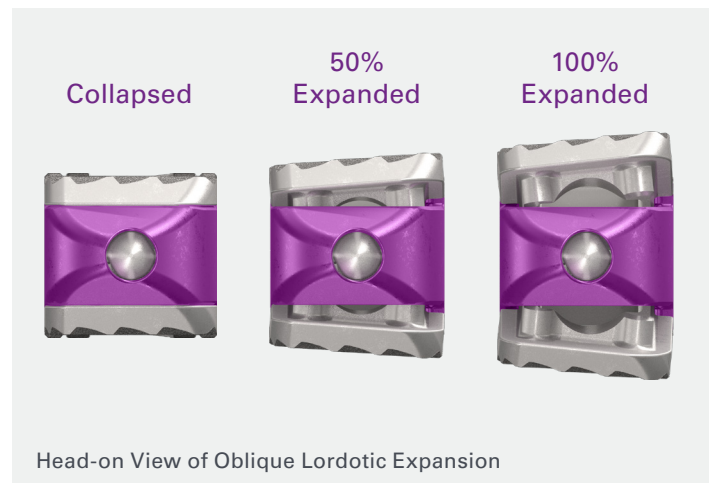
Collapsed—0° Lordosis



50% Expanded—10° Lordosis



100% Expanded—20° Lordosis



TLX provides anterior column stability and restoration of sagittal alignment with up to 20° of customizable oblique lordosis from a posterior approach.

## Streamlined Performance

- One multifunctional instrument designed to rapidly insert, expand and post pack the implant



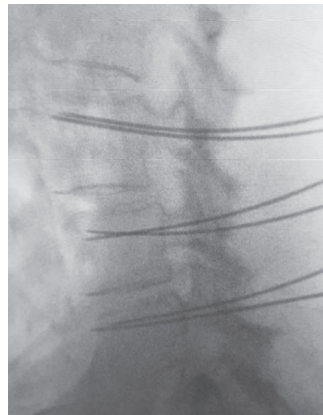
## Case Study

**Age:** 67

**Gender:** Female

**Pathology:** Spinal stenosis with Grade I spondylolisthesis at L3-L4, disc space collapse at L4-L5 and neurogenic claudication. Patient experienced increased pain with flexion and extension.

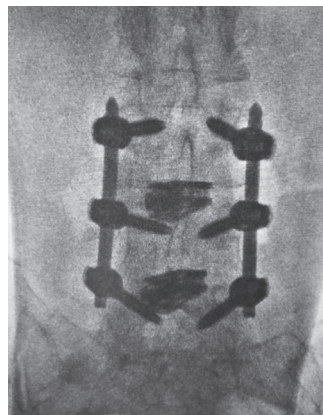
**Procedure:** L3-L4, L4-L5 MAS® TLIF 2 with Reline® MAS Modular fixation and TLX 20°, 10x11x31mm cages, implanted at both levels with 10cc's Osteocel® PRO delivered. Full 20° expansion with both TLX cages.



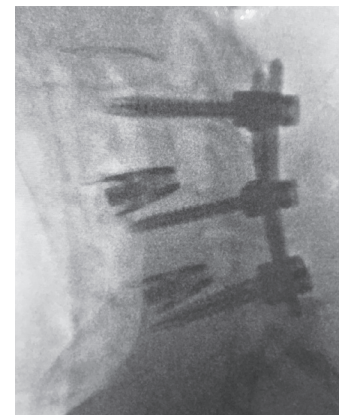
Lateral intraop fluoro, pre-implantation



Pre-op lateral CT



A/P intraop fluoro, post-implantation



Lateral intraop fluoro, post-implantation

 **NuVasive, Inc.**

7475 Lusk Blvd., San Diego, CA 92121 USA  
+1 800.475.9131

 **NuVasive UK Ltd.**

Suite B, Ground Floor, Caspian House  
The Waterfront, Elstree, Herts WD6 3BS UK  
+44 (0) 208.208.238.7850

©2018. NuVasive, Inc. All rights reserved. MAS, Osteocel, Reline, and TLX are registered trademarks of NuVasive, Inc. 9501844 A

CE 0086

[nuvasive.com](http://nuvasive.com)

